



# T.S. ELIOT AND SPIRITUALITY

A UNIQUE OPPORTUNITY FOR STUDENTS TO DEVELOP THEIR UNDERSTANDING OF SPIRITUALITY WHILST LEARNING ABOUT ONE OF THE TWENTIETH CENTURY'S MOST CELEBRATED LITERARY MASTERPIECES.

This SMSC4SCHOOLS workshop aims to...

Develop understanding of the religious or spiritual dimension of human experience.

Offer opportunities for students to reflect on the human condition and meaningful experiences.


Examine religious ideas by analysing how religious language works.

Explore the traditions which influenced the writing of four quartets.

Examine "four quartets" within mystical traditions - both contemporary and older.

Email [admin@smsc4schools.co.uk](mailto:admin@smsc4schools.co.uk)

One day workshop for up to 20 students only £395.00  
Price includes class set of *Four Quartets: T.S. Eliot and Spirituality*  
(RRP £159.00)



SMSC4SCHOOLS is created by Richard Brock, author of *Four Quartets: T.S. Eliot and Spirituality* has been a Head of Religion and Ethics for 15 years. His academic background in religion and mysticism both informs and underpins the ethos of the course.



### Four Quartets and Experience



Your columns probably look something like these:

- Finite
- Conditional
- Temporal
- Time
- Limitation
- Mundane
- Material

- Timeless
- Infinite
- Wholly 'Other'
- Spiritual
- The Still Point
- Unconditional
- Sacred

Take two minutes to add more words to either of these columns...

What exactly is going on here?

What do these two columns represent, do you think?

The two columns represent two levels of experience. We will refer to these as the material and spiritual.

### Four Quartets and Suffering

Charles Baudelaire

Dante Inferno 3

Dante Inferno 3

"a never-ending rout of souls in pain I had not thought death had undone so many as passed before me in that mournful train."

Lines from Eliot's poem, *The Waste Land*, showing just two of its influences.

**Unreal City.**  
Under the brown fog of a winter dawn,  
A crowd flowed over London Bridge, so many,  
I had not thought death had undone so many.  
Sighs, short and infrequent, were exhaled,  
And each man fixed his eyes before his feet.  
Flowed up the hill and down King William Street,  
To where Saint Mary Woolnoth kept the hours

TO PREPARE A FACE  
TO MEET THE FACES  
THAT YOU MEET?



What is your initial impression of the 'crowd'?

What are they doing?

How are they feeling about this?

Much of T. S. Eliot's poetry is a commentary on the theme of suffering in relation to the human condition. From *The Waste Land* (1922), where city workers flow miserably over London Bridge, to the self-conscious figure of *The Love Song of J. Alfred Prufrock* (1915), whose inner conflicts are revealed in the need to 'prepare a face for the faces you will meet'.

Having lived through an era which had witnessed two world wars, Eliot, in *Four Quartets*, gives us a commentary on the nature of suffering which sees that of any of his contemporaries.

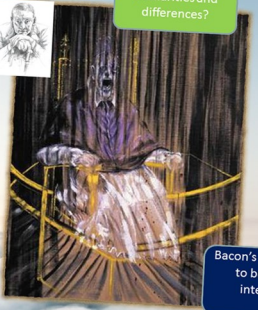
*Four Quartets* is thought to have been inspired by one of Beethoven's late string quartets – Opus 132 in A minor. In a letter dated 1931, Eliot commented to friend and fellow poet, Stephen Spender that:

*'I have the A minor quartet on the gramophone, and I find it quite inexhaustible to study. There is a sort of heavenly, or at least more than human gaiety, about some of his later things which one imagines might come to oneself as the fruit of reconciliation and relief after immense suffering; I should like to get something of that into verse before I die.'*

### Four Quartets and Symbolism

Similarities and differences?

1650 portrait of Pope Innocent X Diego Velázquez. 1650



Bacon's painting is said by one critic to be 'an example of creative re-interpretation of the classical.'

Study after 1650 portrait of Pope Innocent X. Francis Bacon. 1953.

### Contact Us To Order

Email: [admin@smsc4schools.co.uk](mailto:admin@smsc4schools.co.uk)

Phone: 07786 325437

Post: SMSC4SCHOOLS

2 Jubilee Cottages

Horsley Cross, Essex, CO11 2NS

Workshop £395.00 plus expenses\*

\* Mileage charged at 45 per mile.

Accommodation charged if over-night stay required

If you have any queries regarding the workshop or payment please contact us.



SMSC4SCHOOLS.co.uk